

Kenton C. Ward, CFM
Surveyor of Hamilton County
Phone (317) 776-8495
Fax (317) 776-9628

Suite 188
One Hamilton County Square
Noblesville, Indiana 46060-2230

Map Correction-Field Verification

Drain Number: 8495

Drain Length: n/a

Drain Name: W.C. Van Arsdell

Change + / - : n/a

Date: 01-29-2019

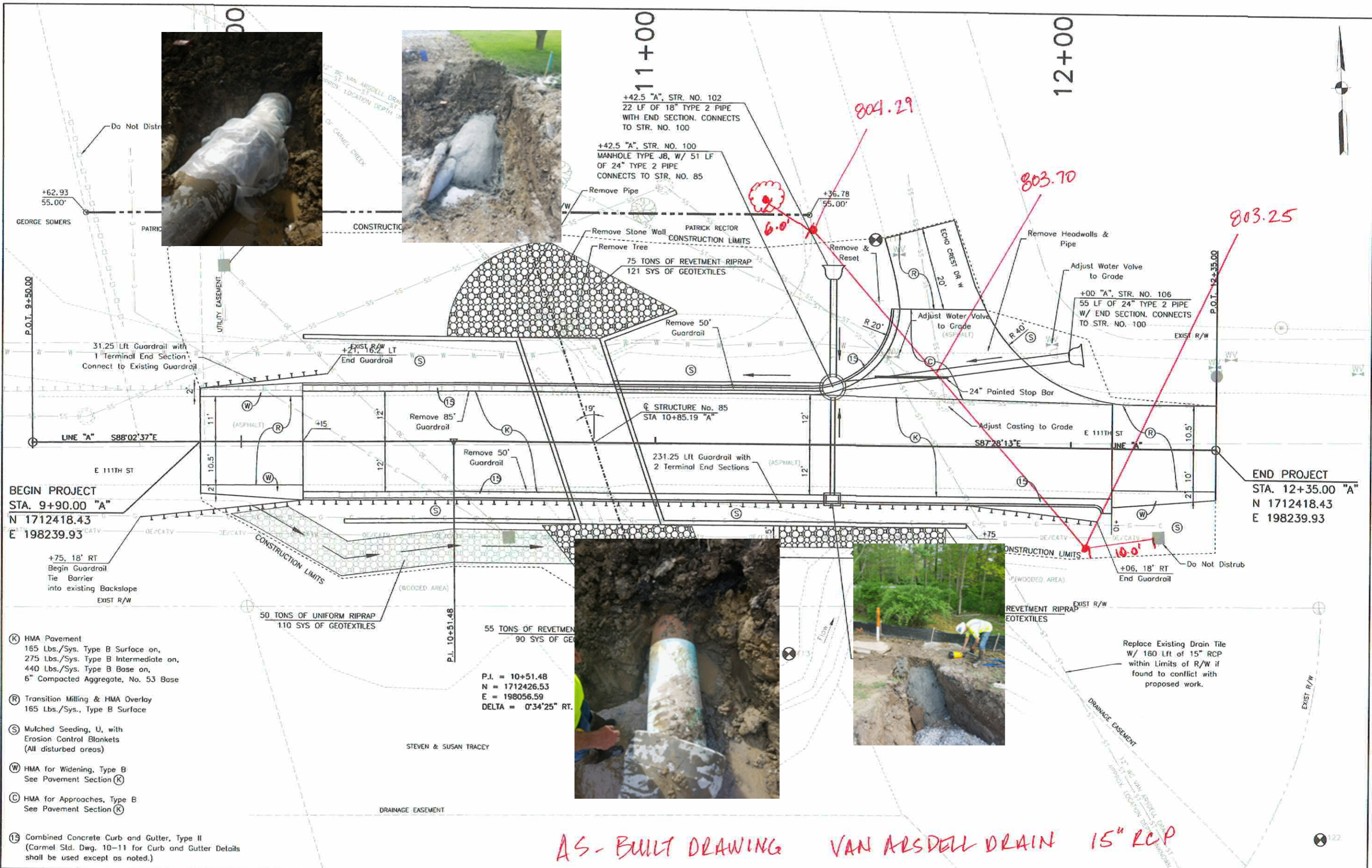
New Length: n/a

Verified By: SLM, SAB

Notes & Sketch: See attached plan.

The existing 12" tile within the right of way for 111th St. was replaced with 15" RCP. This occurred at approximately Sta. 24+45 to Sta. 25+47 of the drain. This was a City of Carmel road improvement project on 111th Street just west of Westfield Blvd at its intersection with Echo Crest Dr. W. This project replaced approximately 102 feet of existing tile drain.


Suzanne L. Mills
GIS Specialist



AS-BUILT DRAWING VAN ARSDALL DRAIN 15" RCP

- (K) HMA Pavement
165 Lbs./Sys. Type B Surface on,
275 Lbs./Sys. Type B Intermediate on,
440 Lbs./Sys. Type B Base on,
6" Compacted Aggregate, No. 53 Base
- (R) Transition Milling & HMA Overlay
165 Lbs./Sys., Type B Surface
- (S) Mulched Seeding, U, with
Erosion Control Blankets
(All disturbed areas)
- (W) HMA for Widening, Type B
See Pavement Section (K)
- (C) HMA for Approaches, Type B
See Pavement Section (K)
- (15) Combined Concrete Curb and Gutter, Type II
(Carmel Std. Dwg. 10-11 for Curb and Gutter Details
shall be used except as noted.)



INDIANAPOLIS - TERRE HAUTE
LAFAYETTE - NEW ALBANY - MUNCIE
www.hwcengineering.com



RECOMMENDED FOR APPROVAL	<i>J. Iseburg</i>	DESIGN ENGINEER	07/20/2017
DESIGNED:	LRA	DRAWN:	LWR
CHECKED:	LJU	CHECKED:	JLI

CITY OF CARMEL
HAMILTON COUNTY
PLAN SHEET
11th STREET OVER U.N.T. OF CARMEL CREEK

HORIZONTAL SCALE	BRIDGE FILE
1"=10'	CULVERT 85
VERTICAL SCALE	DESIGNATION
SURVEY BOOK	SHEETS
	15 of 26
CONTRACT	PROJECT
	16-SW-08(2)